



FADPRT2



By Appointment to
Her Majesty Queen Elizabeth II
Suppliers of Commercial Refrigeration
Foster Refrigerator, King's Lynn

English



Een onderdeel van ITW Ltd

Foster Refrigerator

Oldmedow Road

A Division of ITW Ltd

Foster Refrigerator
Oldmedow Road
King's Lynn
Norfolk, PE30 4JU
United Kingdom



Call: +44 (0)843 216 8800

Fax: +44 (0)843 216 4700
www.fosterrefrigerator.co.uk

Email: support@foster-uk.com



Climate Class

Climate class indicated on the serial plate, shows the temperature & humidity at which this appliance has been tested, for the purposes of establishing values in line with European standards.









Important Note to the Installer:

Please ensure that this document is passed to the user as it contains important guidelines on operation, loading, cleaning and general maintenance and should be kept for reference.

Electrical Safety

Foster Refrigerator recommends that the equipment is electrically connected via a Residual Current Device, such as a Residual Current Circuit Breaker (RCCB) type socket, or through a Residual Current Circuit Breaker with Overload Protection (RCBO) supplied circuit.

General Safety

-  Do not store explosive substances, such as aerosol cans with a flammable propellant, in this appliance.
-  Keep all ventilation openings in the appliance, or in the structure of a built in unit, clear of any obstructions.
-  Do not use electrical appliances inside the storage compartment.
-  The appliance is air tight when the door is closed, therefore under no circumstances should any living body be stored or 'locked in' the appliance.
-  The moving of the appliance should be carried out by competent personnel taking care to maintain the stability of the equipment at all times.
-  The emitted sound level of this appliance is 63db(A).
-  If the supply cord is damaged, it must be replaced by the manufacturer, it's service agent or similarly qualified persons.
-  Care should be taken to avoid prolonged contact with cold surfaces with unprotected body parts. Correct PPE should be used at all time.

Disposal Requirements

If not disposed of properly, these cabinets have components that can be harmful to the environment. All cabinets must be disposed of by appropriately registered and licensed waste contractors, and in accordance with national laws and regulations.

Introduction

Foster, Automatic, Defrost, Prove, Retard. 2 Trolley

The pizza processing operation is provided in three formats:

1. Fully automatic program incorporating all three functions.
2. Manual Thaw/store program.
3. Manual Prove/ Retard program.

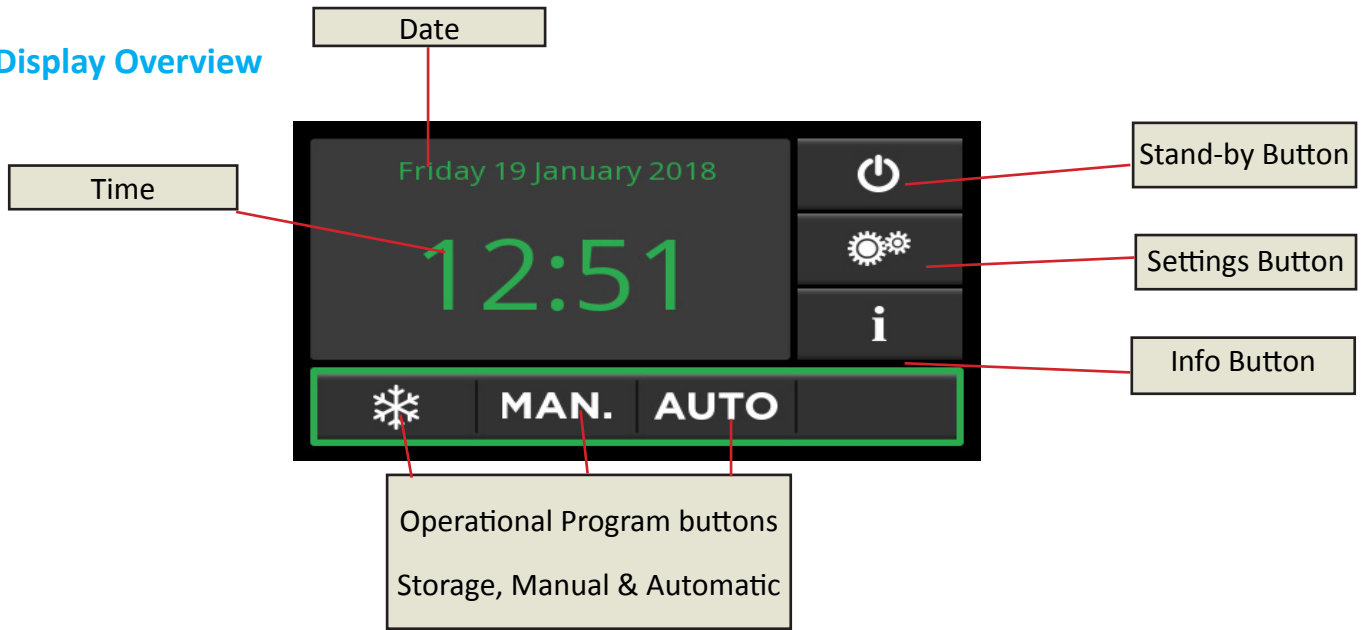
The cabinet is designed to accommodate two special pizza trolleys.

The control system for each function displays time and temperature, allowing the operator to determine the status of the process.



Operating Instructions

Display Overview



In order to provide a highly visible, readily understandable format for the operator, the display screen uses a 'surround signal'; a colour code that has phase specific meanings as follows:



Green – Normal operating mode - no intervention required.

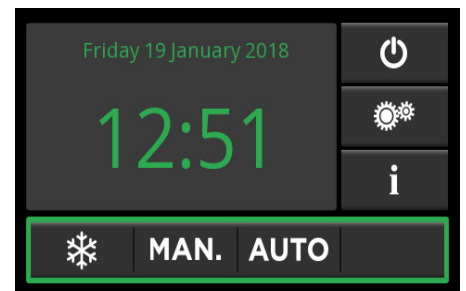
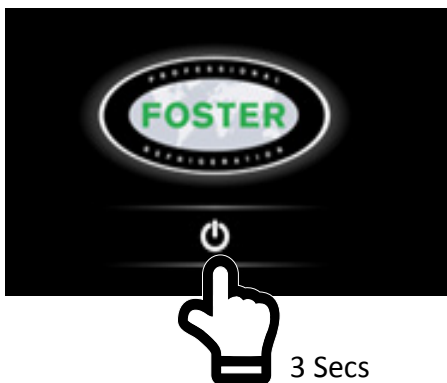


Yellow – Program in operation - no intervention required.

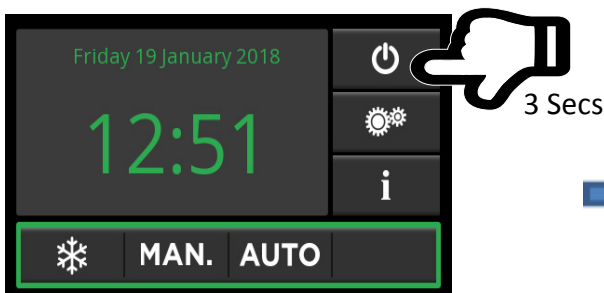


Red – Process or system issue – operator intervention required.

Switching 'On' from 'Standby'

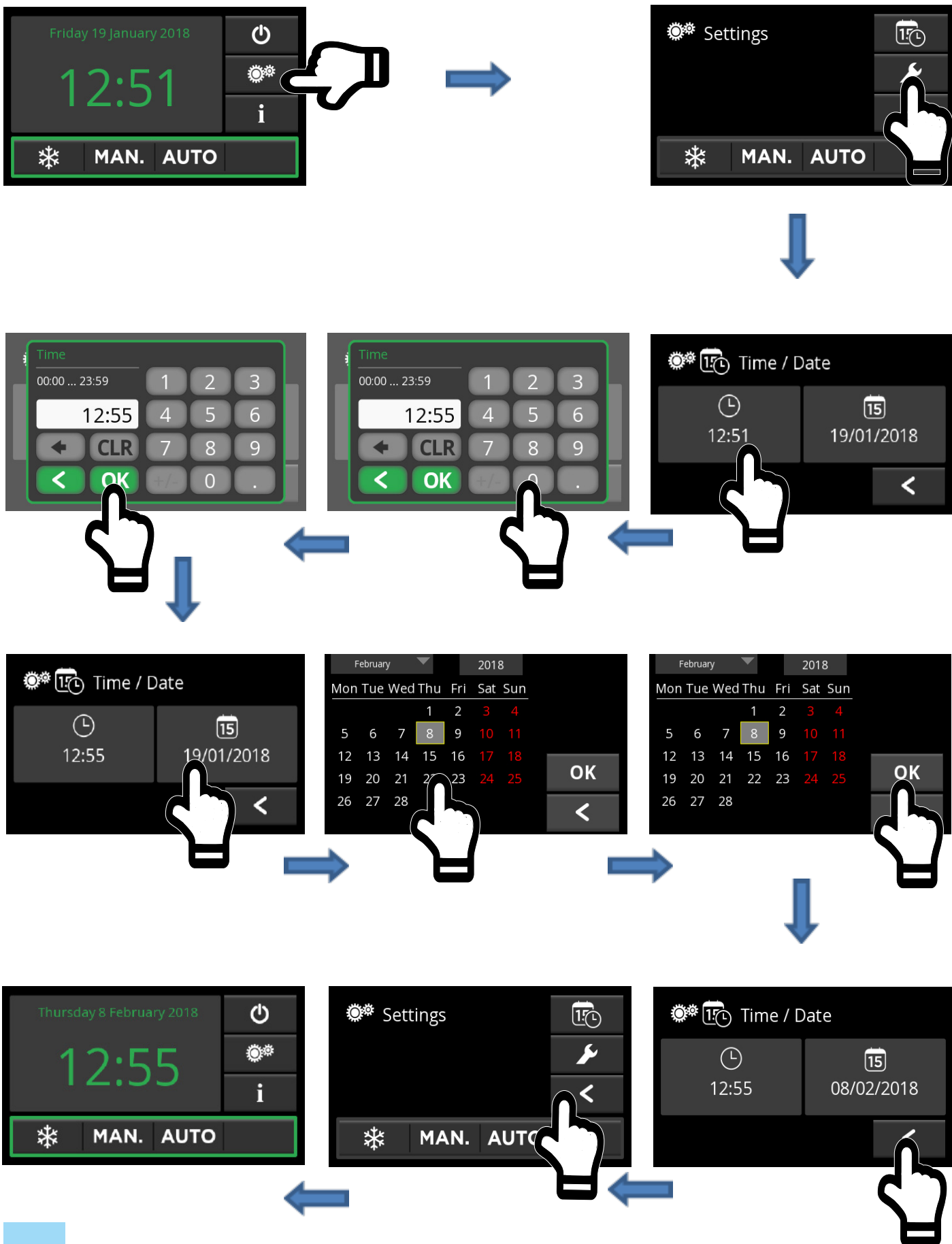


Switching to Standby

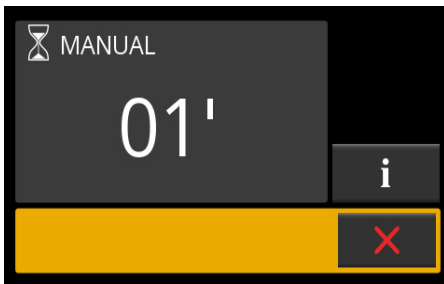
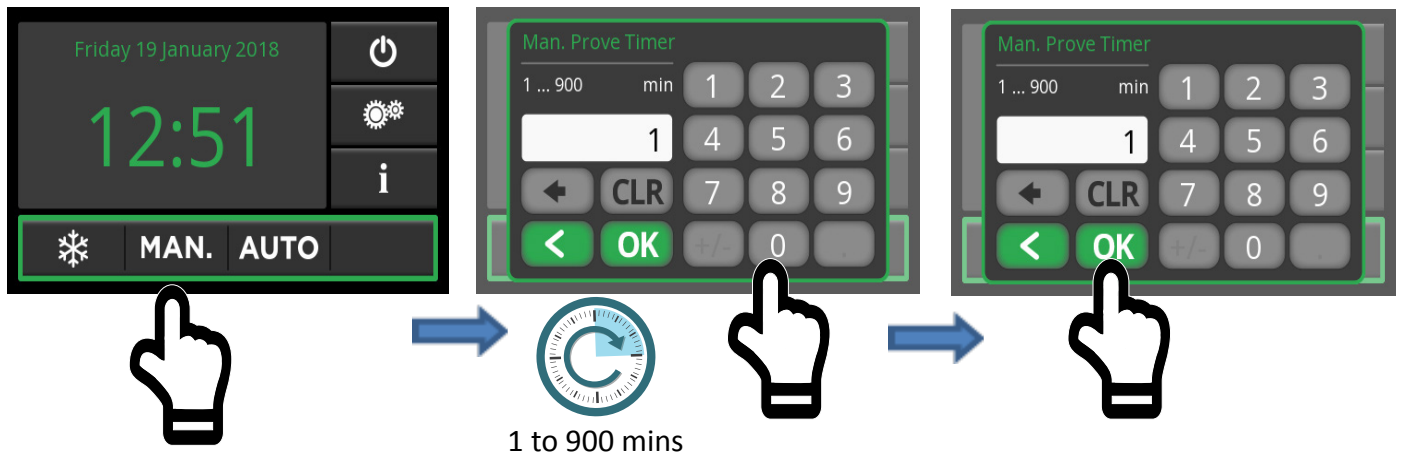




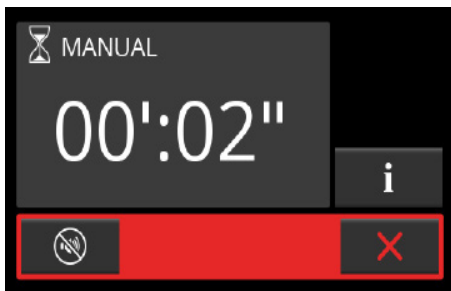
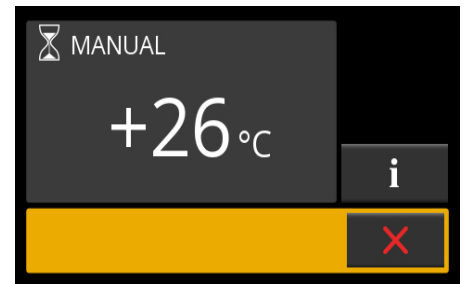
Changing Clock & Calendar



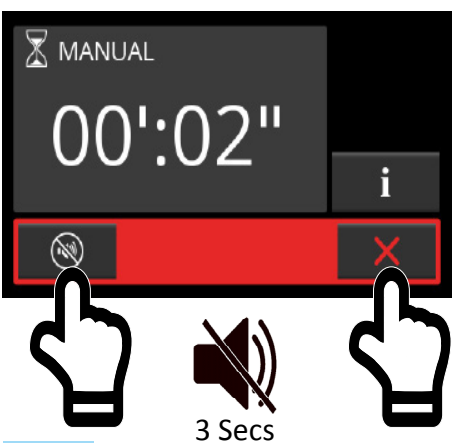
Starting a Manual Prove Program



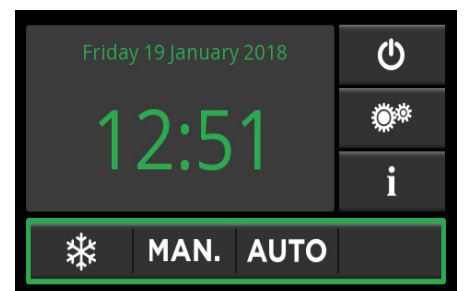
Display during program



2 minutes

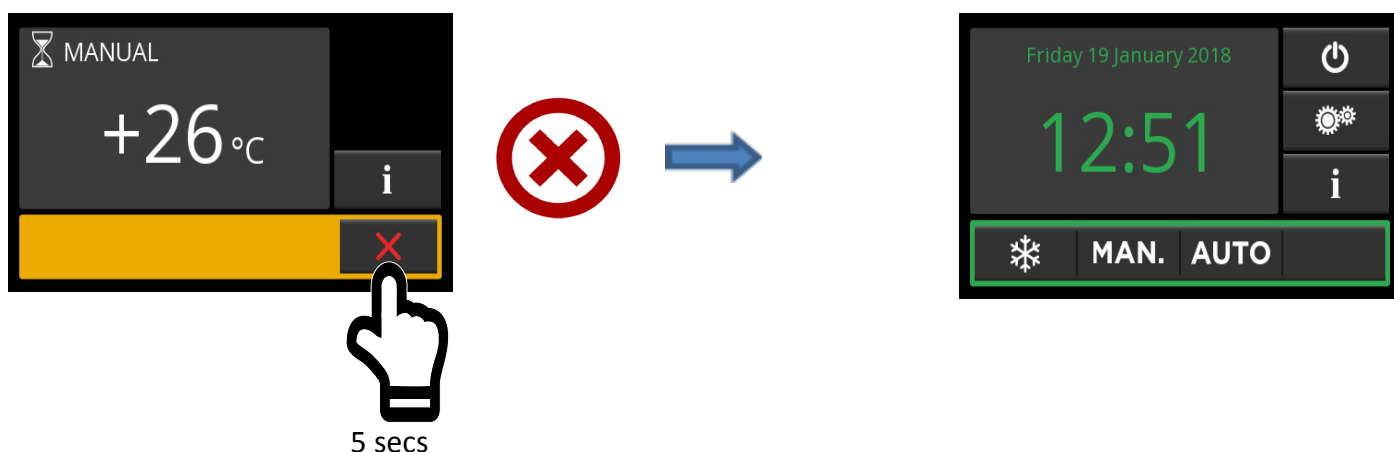


3 Secs

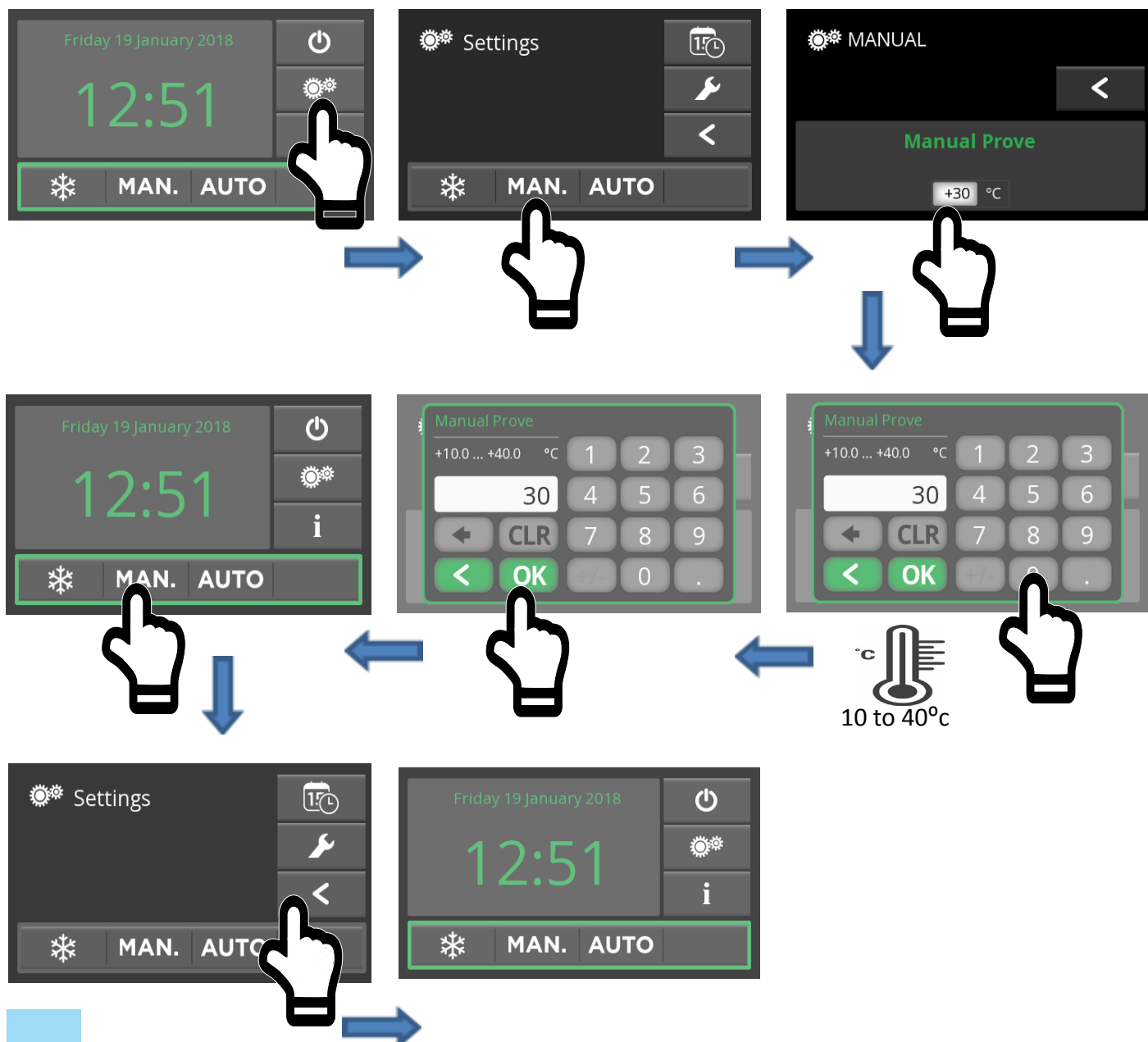




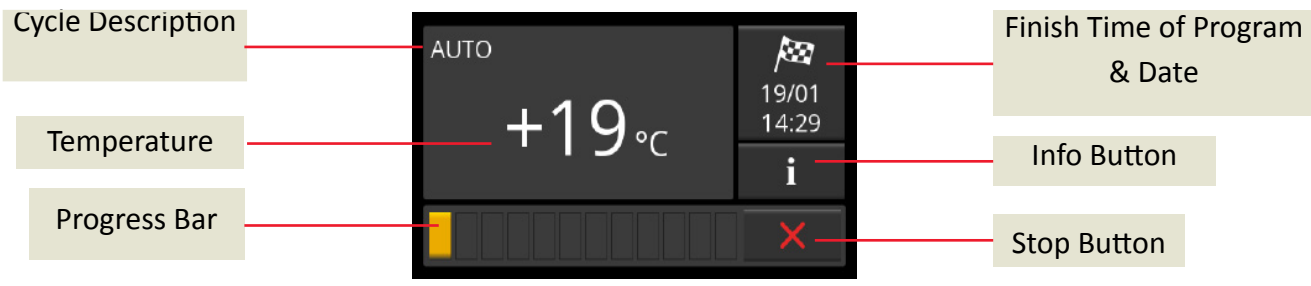
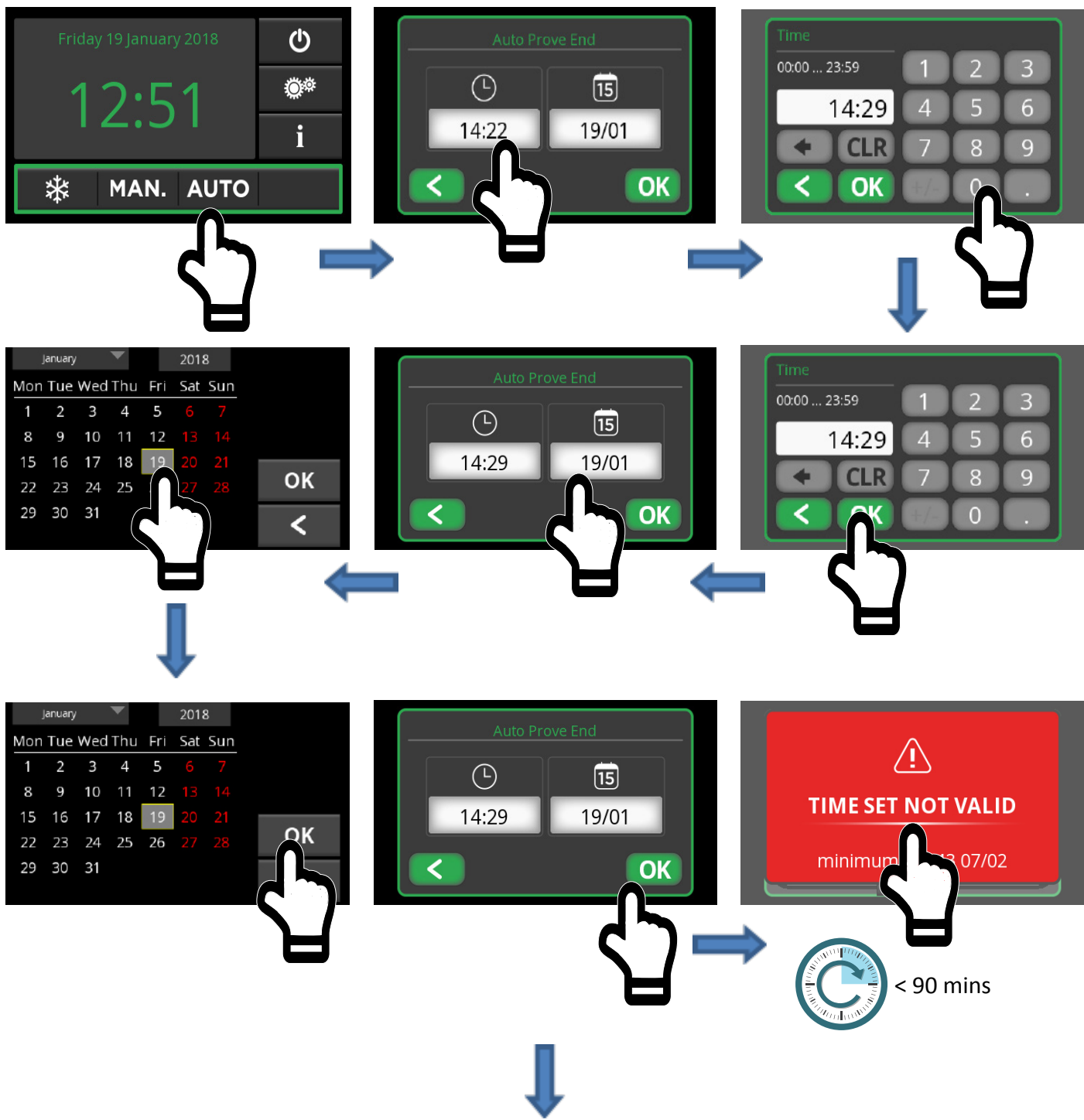
Cancelling a Manual Prove Program in Progress



How to change the Temperature Setting for the Manual Prove Program & Start the cycle

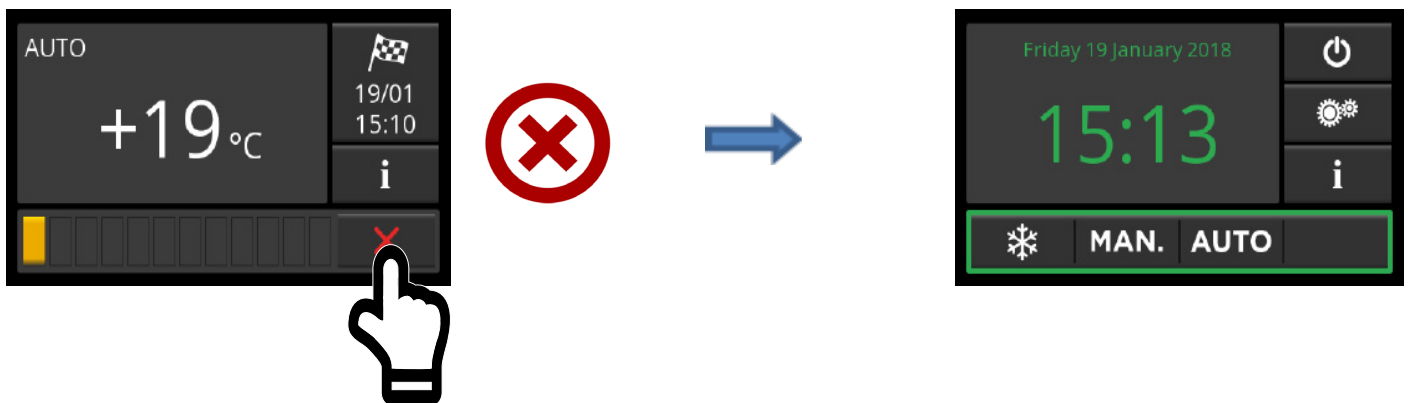


Selecting an Automatic Prove Program

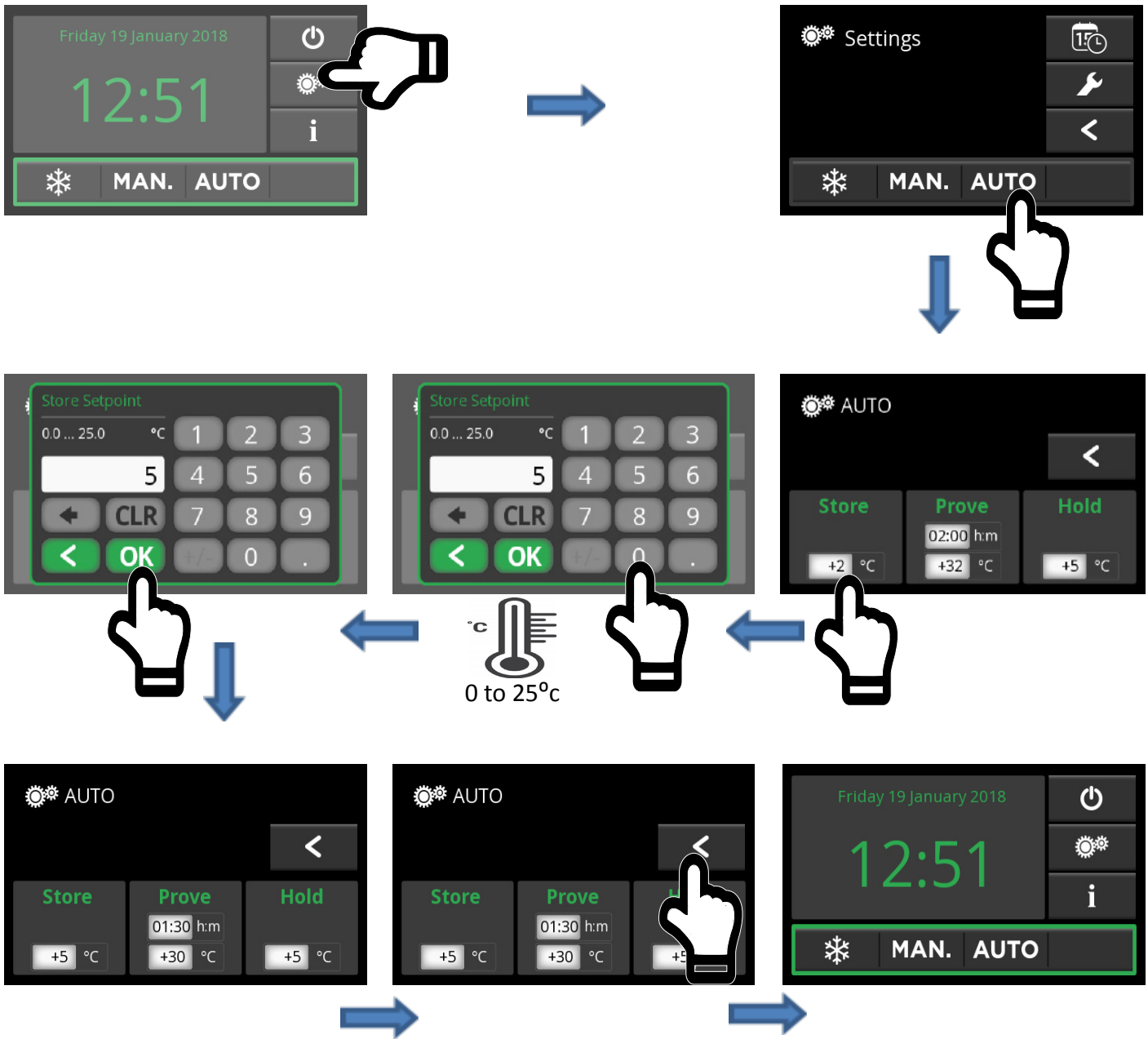




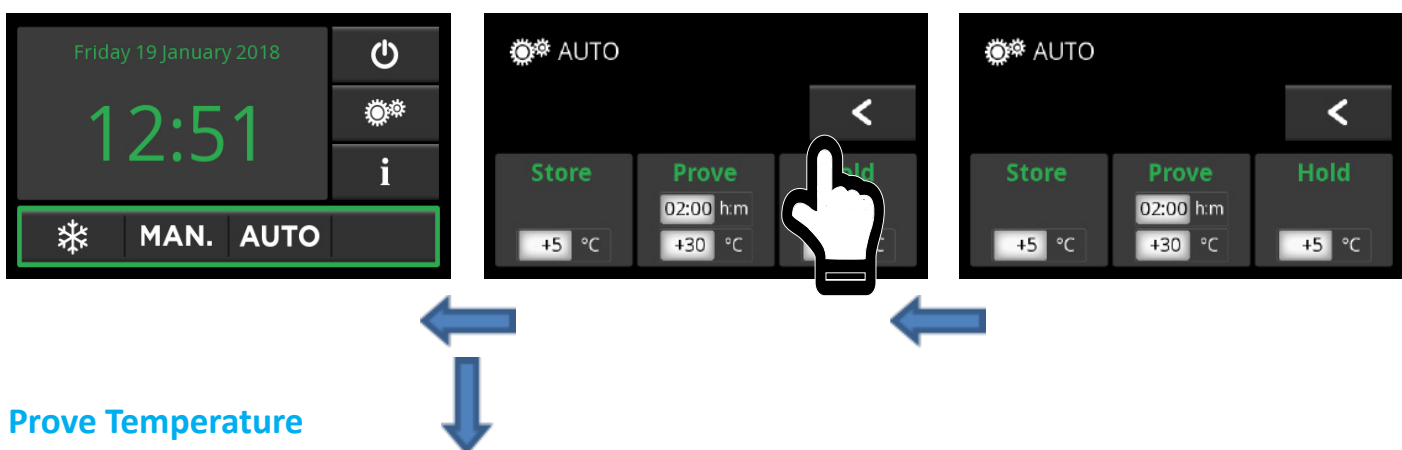
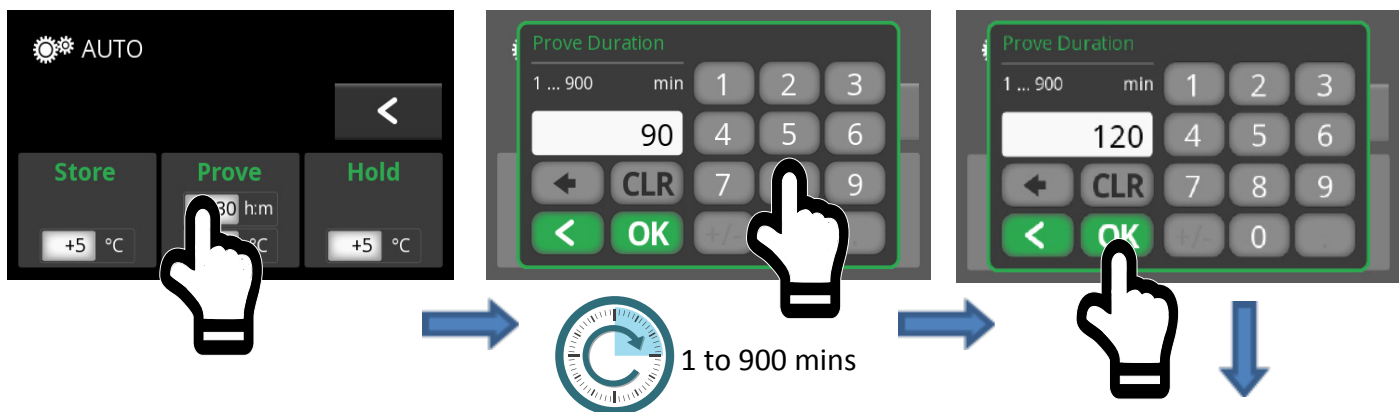
Cancelling an Automatic Prove Program



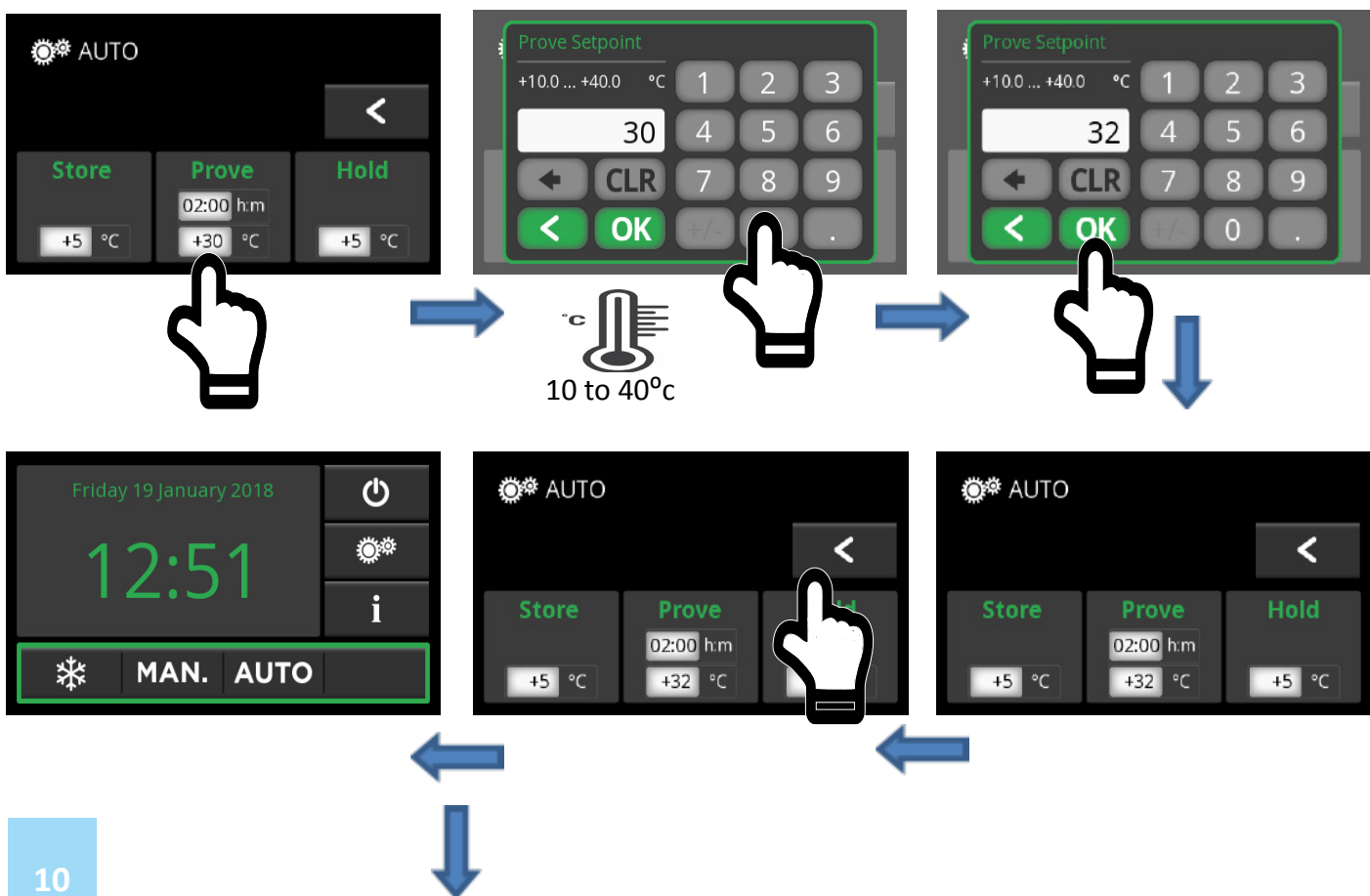
How to change the settings for a Automatic Prove Program Storage



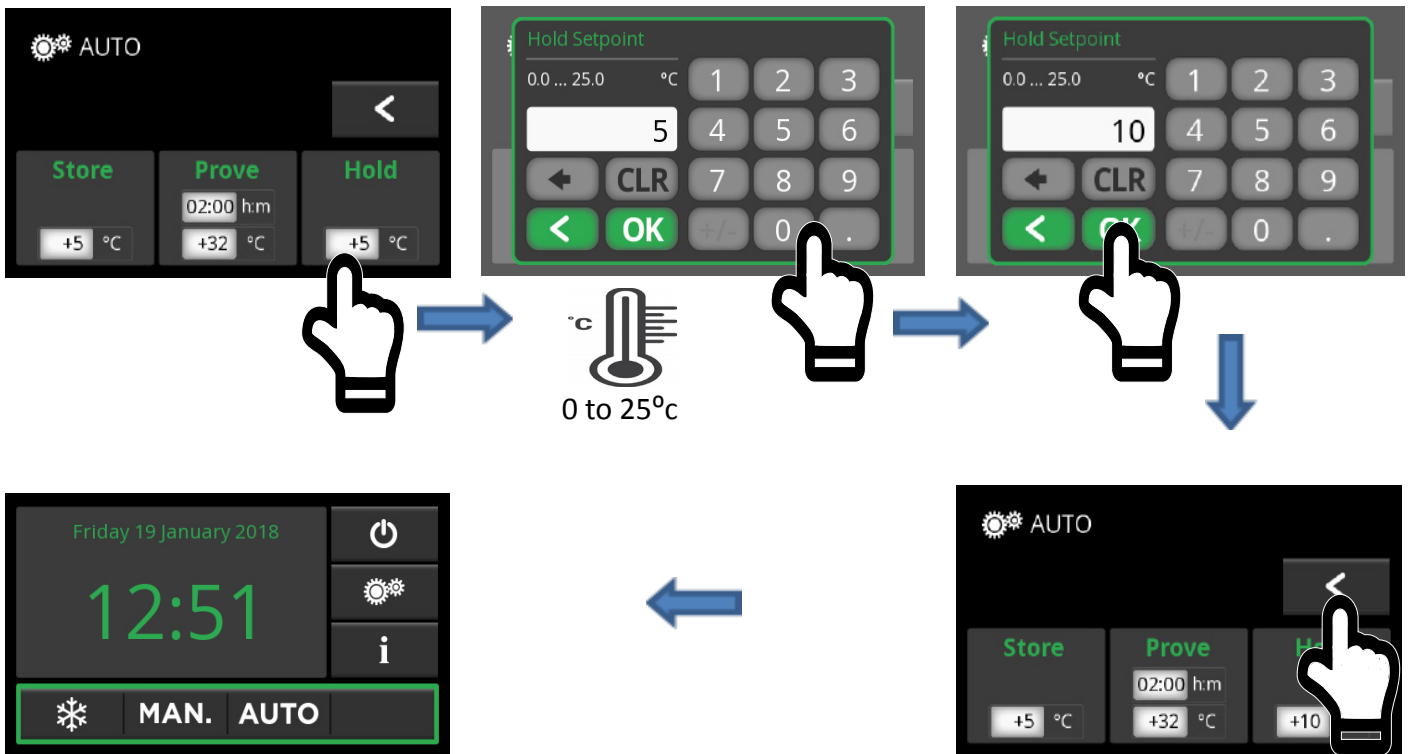
Prove time



Prove Temperature



Hold





UK Head Office

Foster Refrigerator
Oldmedow Road
Kings Lynn
Norfolk
PE30 4JU

a Division of ITW (UK) Ltd

Tel: +44 (0)843 216 8833
Fax: +44 (0)843 216 4707

Email: support@foster-uk.com

Website: www.fosterrefrigerator.co.uk

Part Number: 00-570524